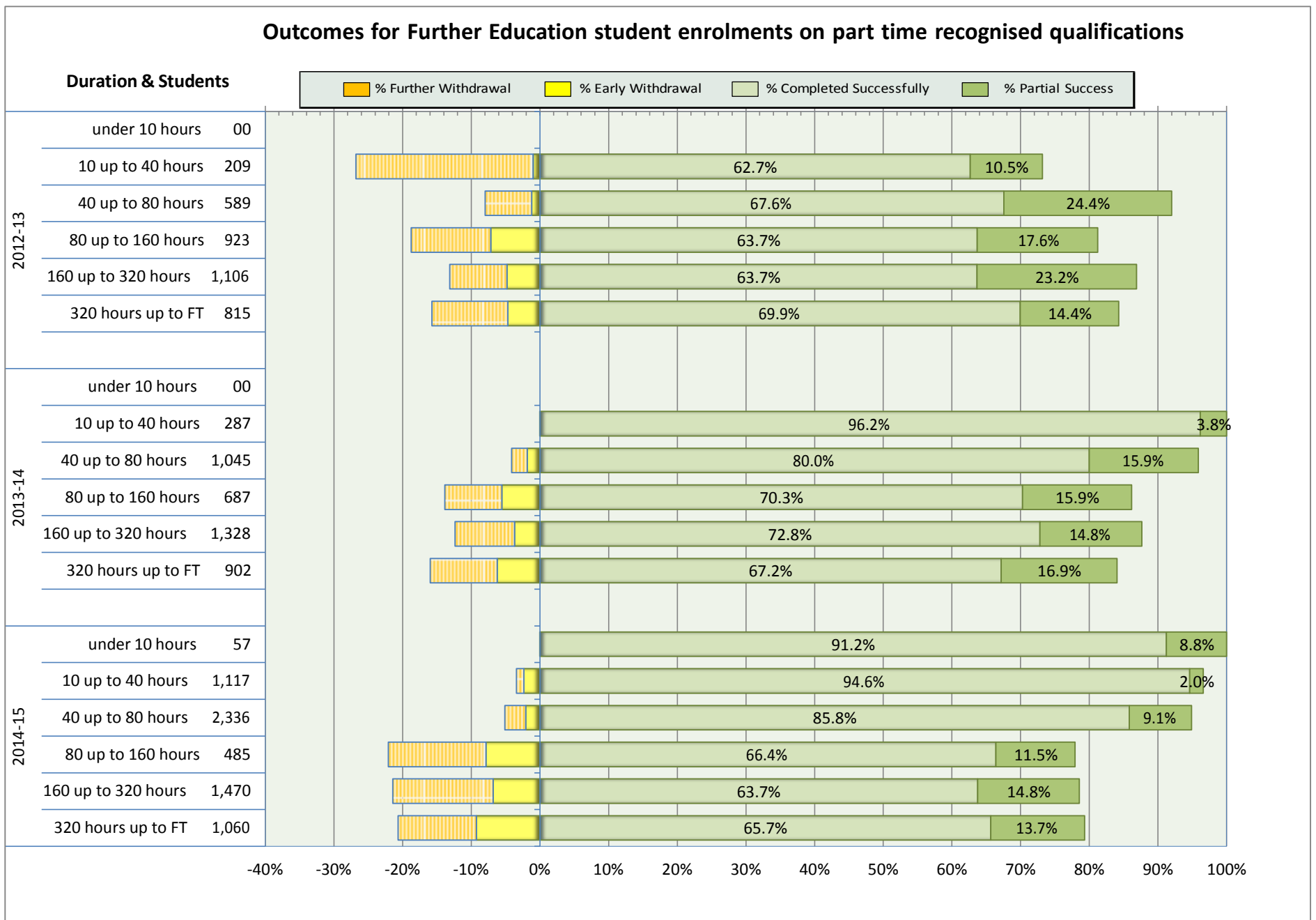
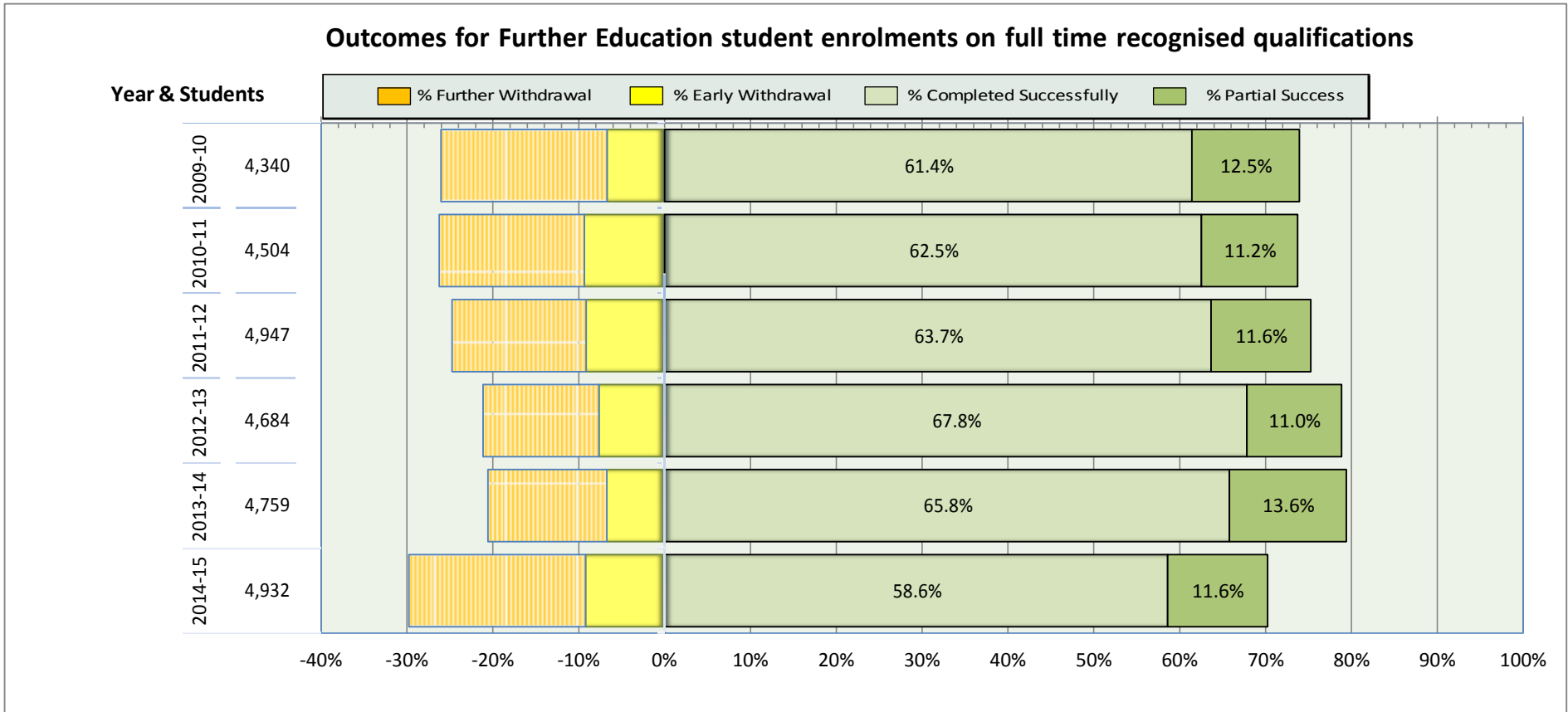


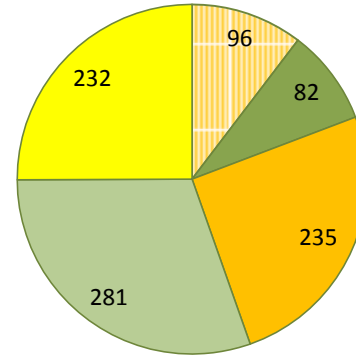
Ayrshire College 2014-15 Performance Indicators



**Level of achievement for students completing an FE course of 160 hours or more who did not achieve 'full' success**

**(An overview of the 'completed partial success' group above)**

- Number of students who complete their course without gaining any units / credits
- Number of students completing their course achieving up to 25% of planned units
- Number of students completing their course achieving 25 to 50% of planned units
- Number of students completing their course achieving 50 to 75% of planned units
- Number of students completing their course achieving at least 75% of planned units



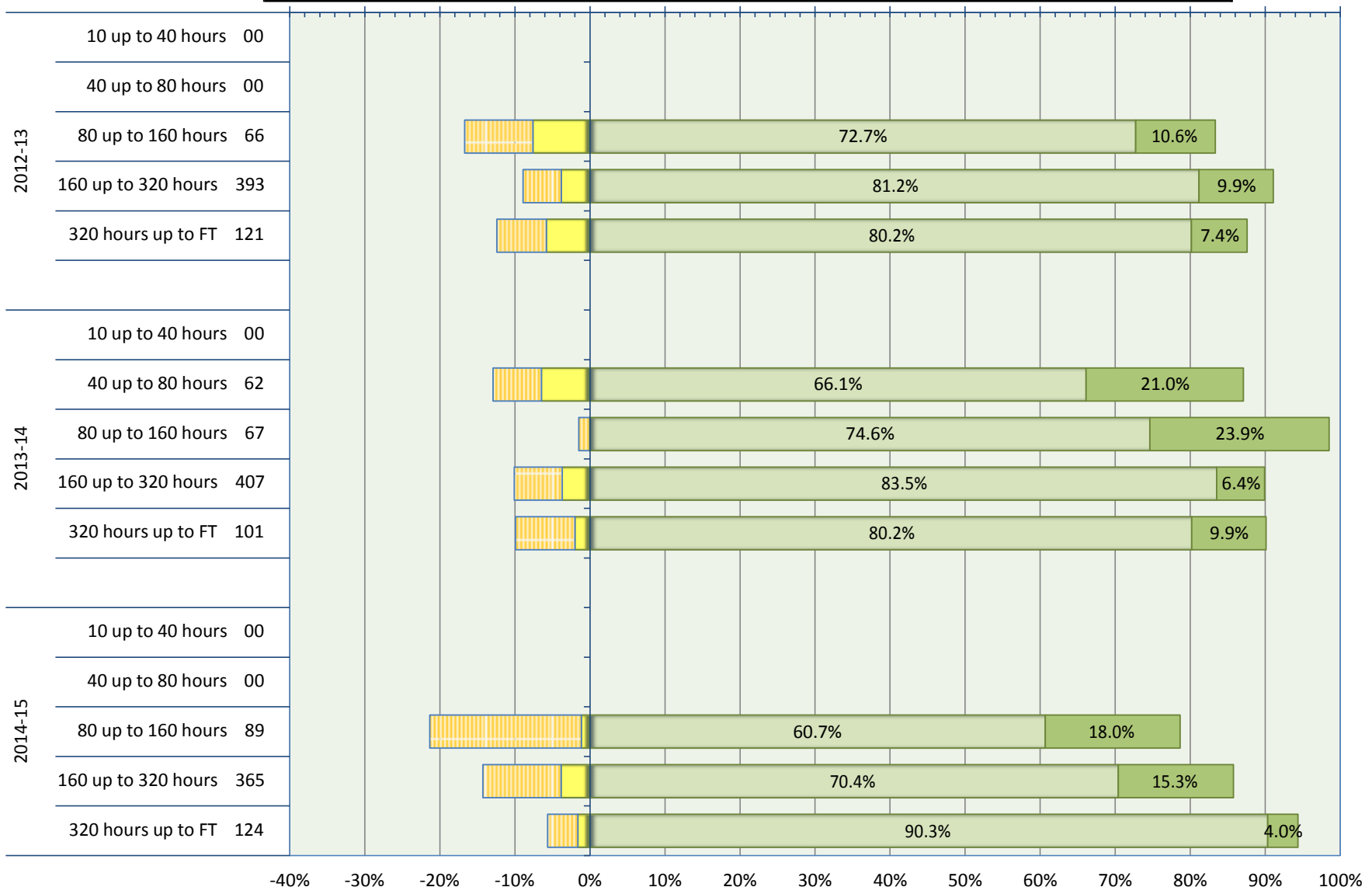
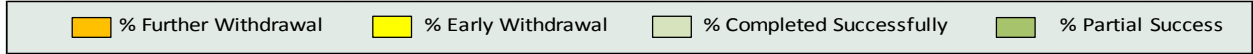
**Outcomes for Higher Education student enrolments on full time recognised qualifications**

**Year & Students**



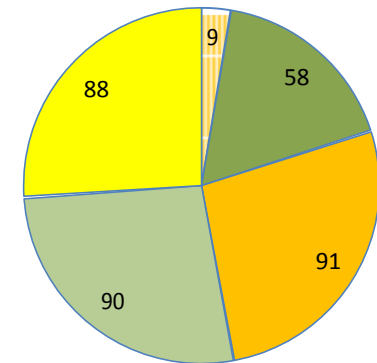
### Outcomes for Higher Education student enrolments on part time recognised qualifications

#### Duration & Students



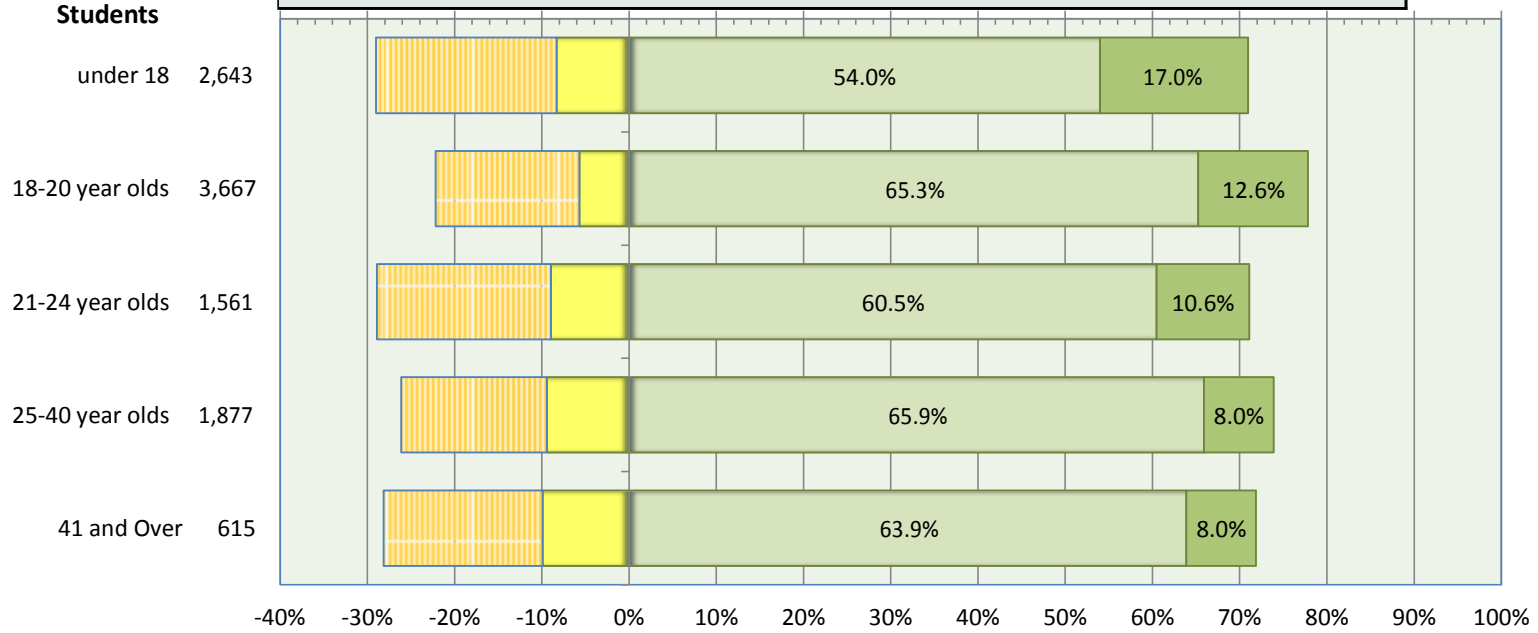
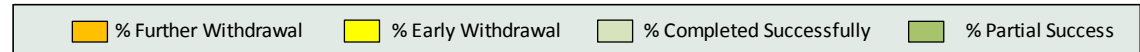
#### Level of achievement for students completing an HE course of 160 hours or more who did not achieve 'full' success (An overview of the 'completed partial success' group above)

- Number of students who complete their course without gaining any units / credits
- Number of students completing their course achieving up to 25% of planned units
- Number of students completing their course achieving 25 to 50% of planned units
- Number of students completing their course achieving 50 to 75% of planned units
- Number of students completing their course achieving at least 75% of planned units

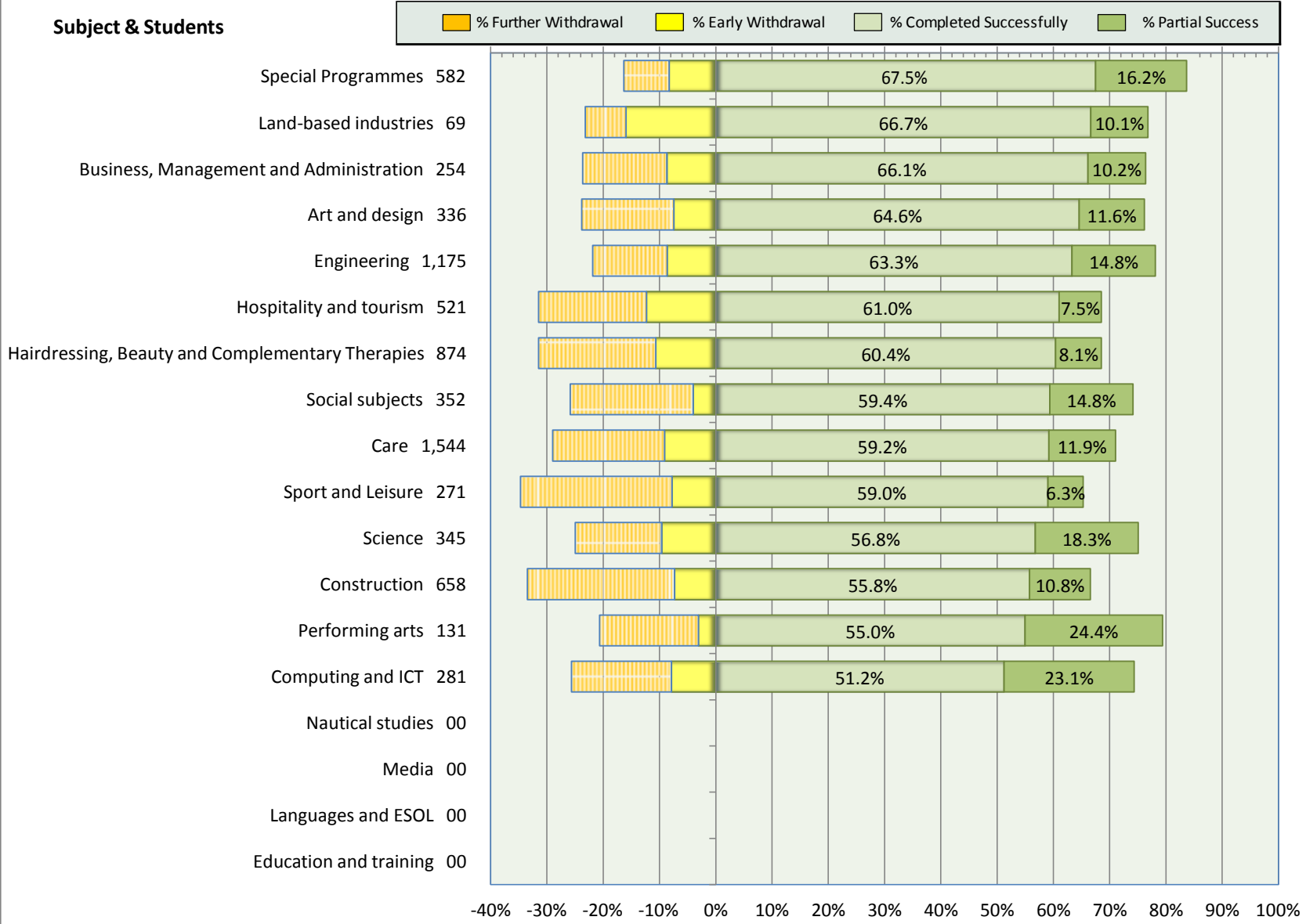


#### Enrolments by age group for courses lasting 160 hours or more

#### Age group & Students



### Enrolments by HMIE subject groupings on FE courses lasting 160 hours or more



### Enrolments by HMIE subject groupings on HE courses lasting 160 hours or more

